

Configuring Empower for ACD/AutoChrom

ACD/AutoChrom Console
Version 1.00

Teresa Ponzio, Michael McBrien, and Andrey Vazhentsev
Advanced Chemistry Development, Inc.
Toronto, ON, Canada
www.acdlabs.com

Introduction

In order for ACD/AutoChrom for Empower¹ to function properly, Empower™ must be configured correctly. In this technical note, two requirements are discussed for the configuration of Empower.

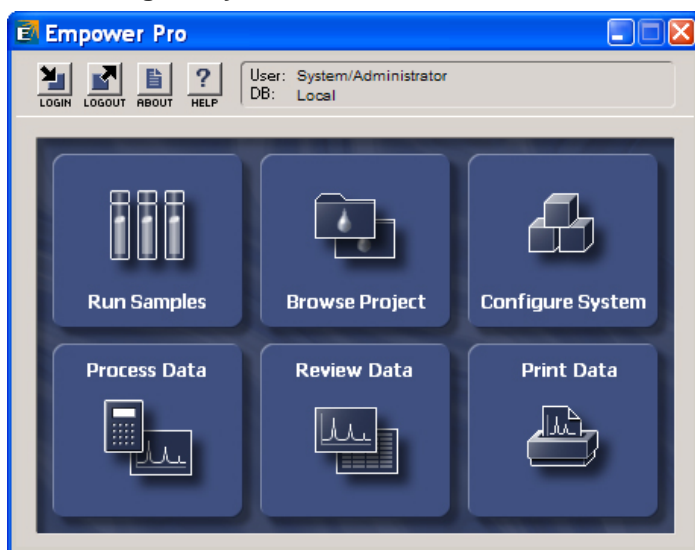
Installation of Feature Release 5 for Empower 2

Empower 2 Feature Release 5 or later should be installed on the client computer, connected to the instrument. This will ensure the correct data transfer capabilities.

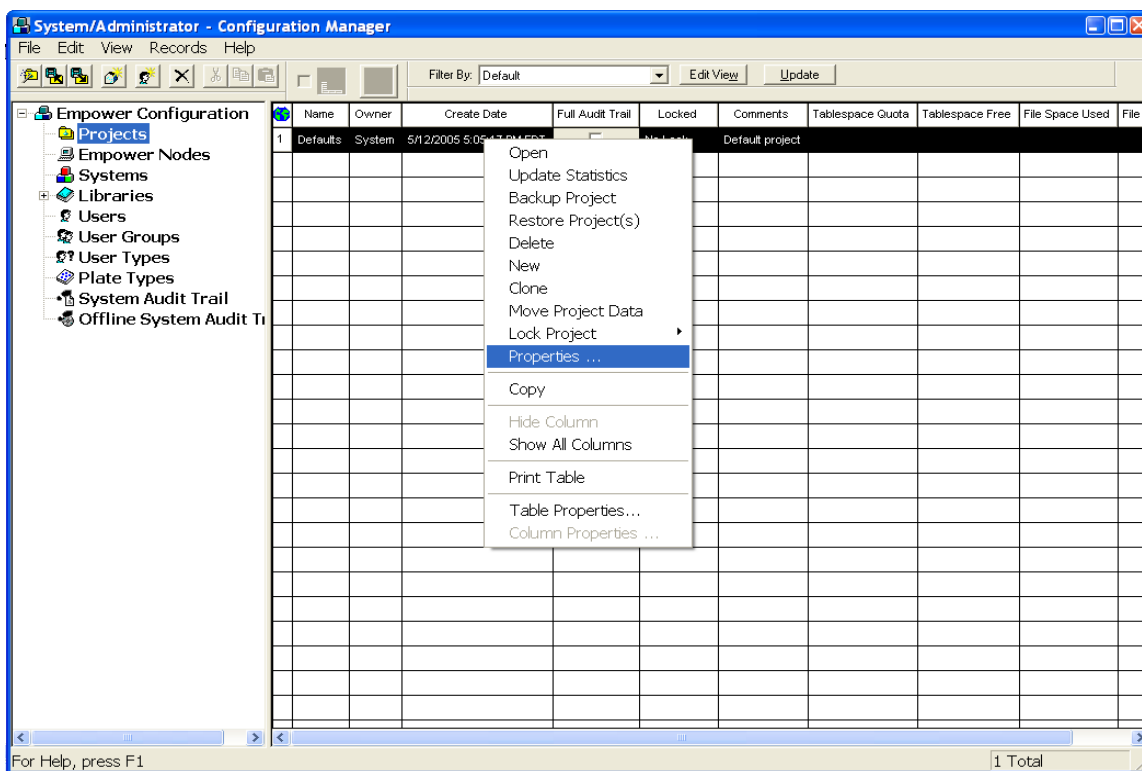
Specifying Project Properties in Empower

In an Empower project, there are **Enabled Options** available on the **General** tab in the **Project Properties** to specify the type of data recognized by Empower. If these options are not checked, the Empower toolkit is unable to import the data and the user is unable to see the corresponding data types in Empower. This causes the inability for ACD/AutoChrom to read the signals. To ensure these options are enabled, follow the steps below.

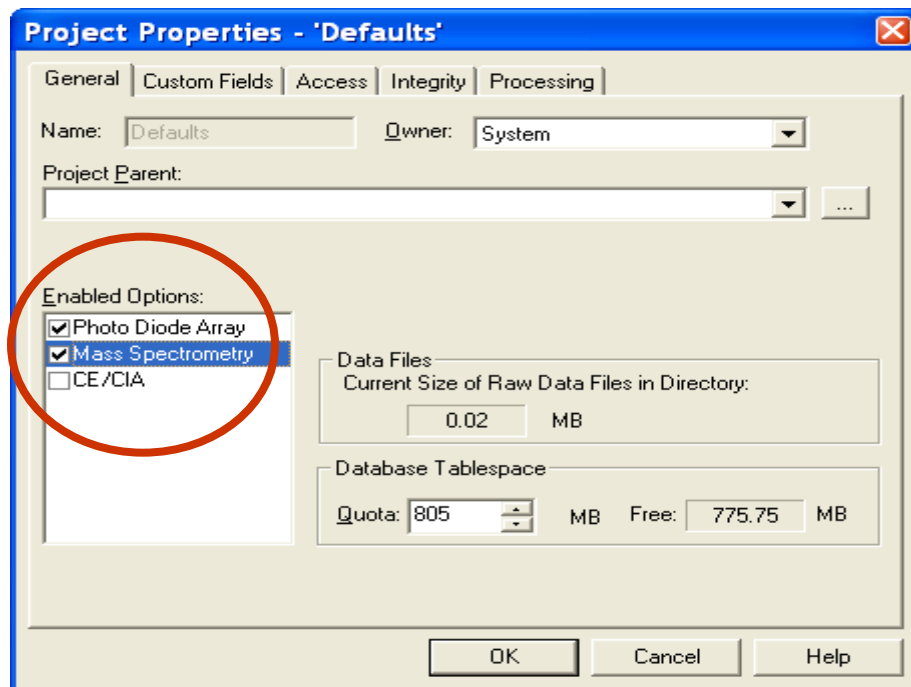
1. Login to Empower.
2. Click **Configure System**.



- In the **Configuration Manager** window, highlight the project of interest, right-click and select **Properties**.



4. On the **General** tab, in the **Project Properties** dialog box, check the **Photo Diode Array** and **Mass Spectrometry** boxes in **Enabled Options**.



Conclusion

This technical note describes the required configuration of ACD/AutoChrom for Empower to function properly. First, Feature Release 5 or later of Empower 2 needs to be installed on the client computer that connects to the instrument. Second, the "Enabled Options" must be specified for the recognition of data types.

References

1. ACD/AutoChrom for Empower. www.acdlabs.com/autochrom/empower/ Advanced Chemistry Development, Inc., Toronto, ON, Canada. June 5, 2008.