

Vendor-Neutral, Browser-Based LC/MS Data Processing



ACD/Labs®

Anne Marie Smith, Richard Lee, Ed Milton-Harris, Vitaly Lashin, Sofya Chudova, Nikita Gravrilchik, Rostislav Pol
Advanced Chemistry Development UK Ltd. (ACD/Labs), Bracknell, Berks, United Kingdom, RG12 1WA

Why Move Analytical Data Processing to the Browser?

Browser-based applications have unique advantages when compared to desktop software, including:

- accessibility from any computer
- elimination of software installations or updates for users
- minimal CPU requirements

For scientists and their organizations, the flexibility of a browser-based analytical data processing application reduces the barrier to obtaining results and allows for more effective remote and hybrid work.

Realizing Browser-Based Analytical Data Processing

Spectrus JS is the first browser-based analytical data processing application that supports vendor-neutral LC/UV/MS and GC/MS (xC/UV/MS) data processing.



Access a complete set of data processing tools in your browser



Integrate seamlessly with your existing instruments



Easily add and maintain software access as your team grows



Deploy confidently with cloud-based and on-premises options

What Can You Do with Spectrus JS?

- Import and process xC/UV/MS and NMR data from most major instrument vendors
- Assemble data into configurable reports with a single click
 - Reports automatically update to reflect subsequent processing
- View the full audit trail of processing history
- Option to connect to databases:
 - Read and edit records stored in ACD/Labs databases
 - Read records from third-party and in-house databases (requires a separate query tool)
- Predict 1D and 2D NMR spectra

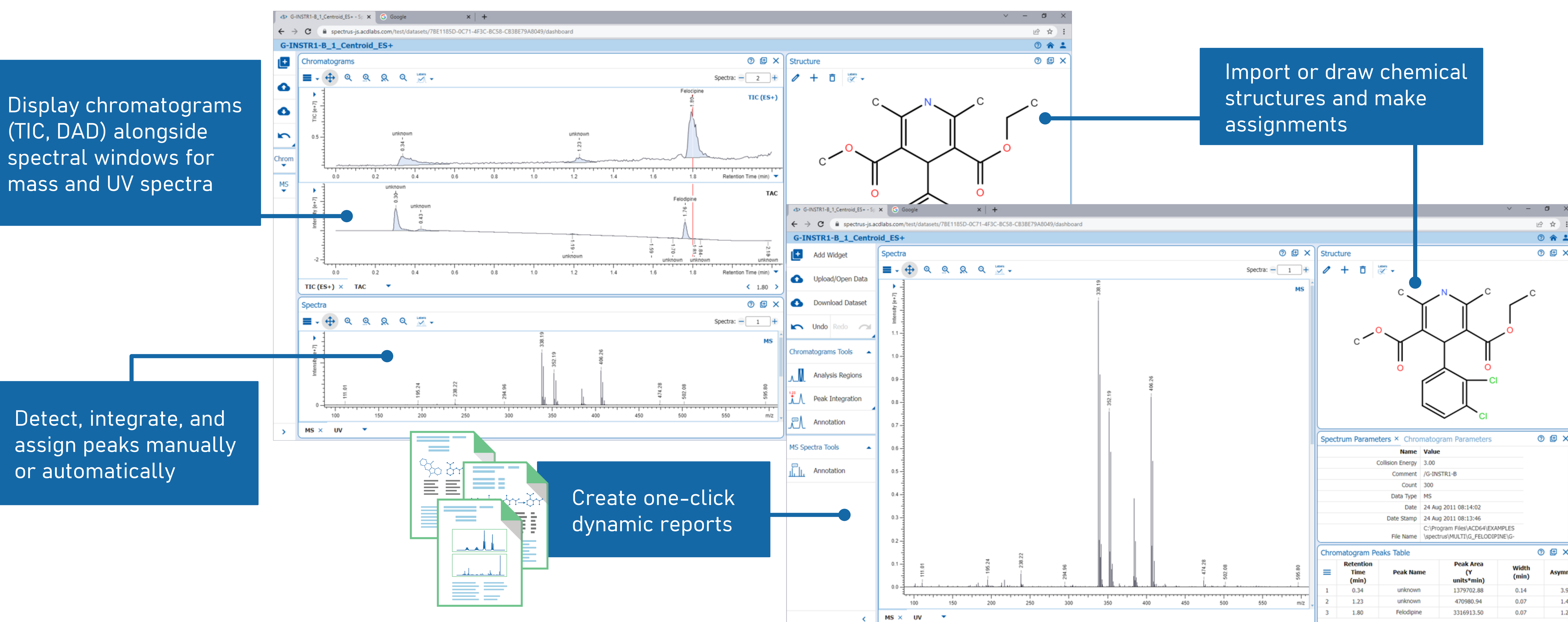
An Intuitive Interface for Processing xC/UV/MS and NMR Data

Display chromatograms (TIC, DAD) alongside spectral windows for mass and UV spectra

Detect, integrate, and assign peaks manually or automatically

Create one-click dynamic reports

Import or draw chemical structures and make assignments



Designed to Streamline Workflows for Analytical Teams

